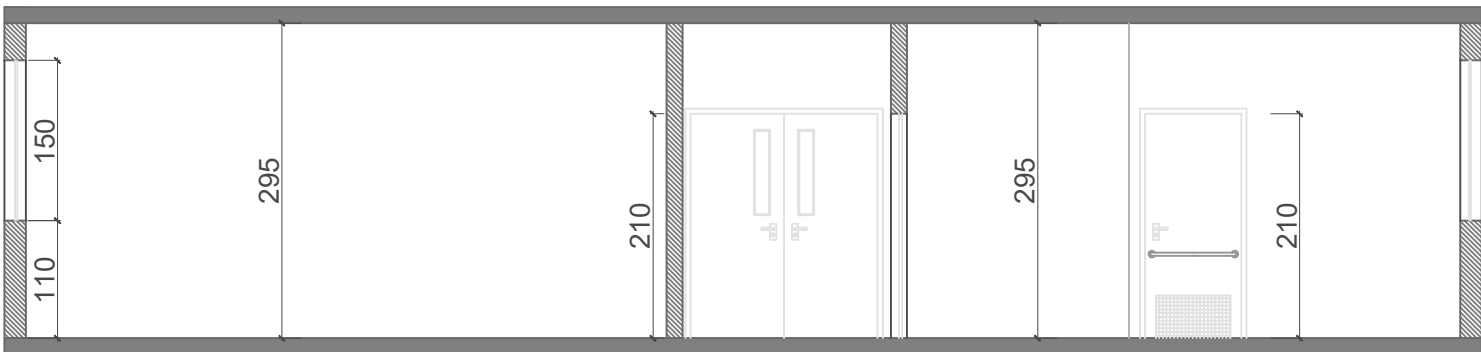
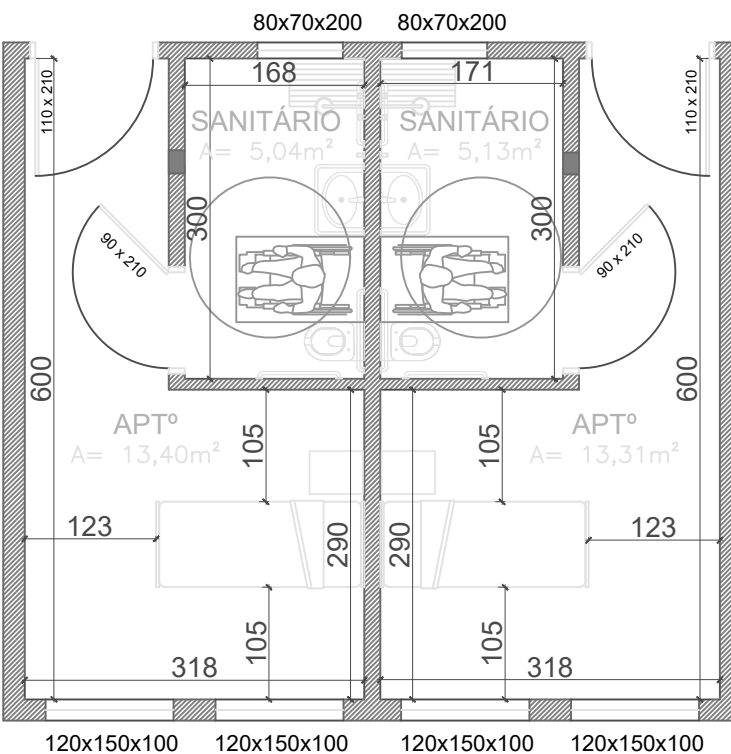


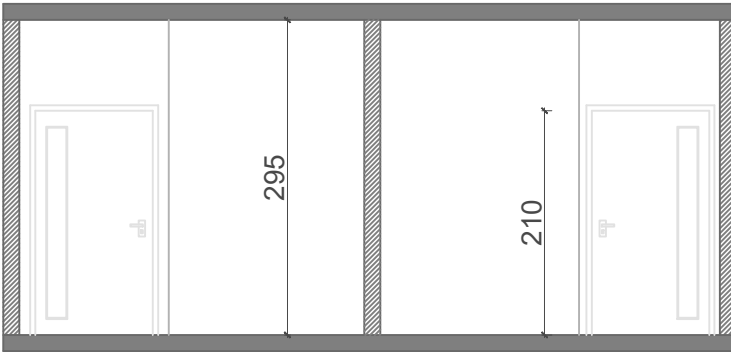
CORTE AA
Hospital Municipal Santana
ESC 1/50



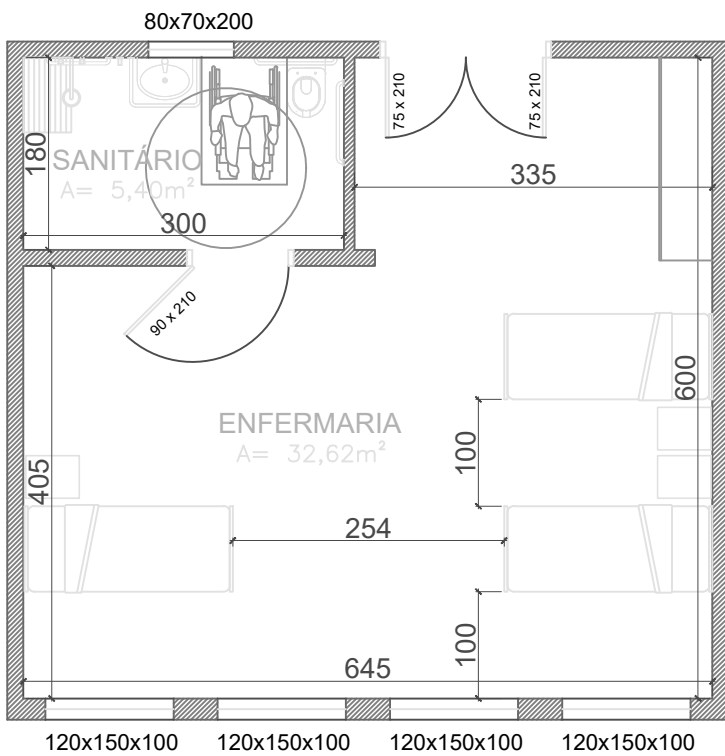
CORTE BB
Hospital Municipal Santana
ESC 1/50



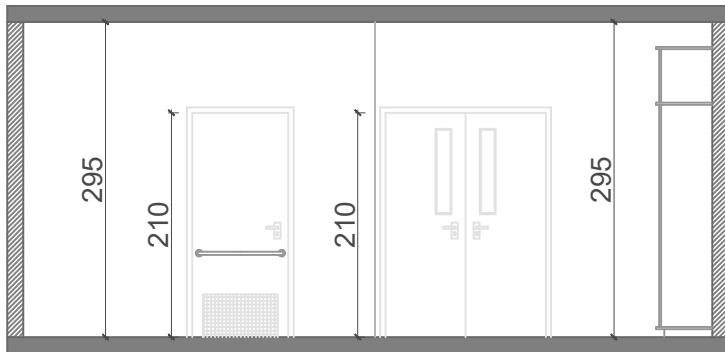
PLANTA DET. APARTAMENTO
Hospital Municipal Santana
ESC 1/50



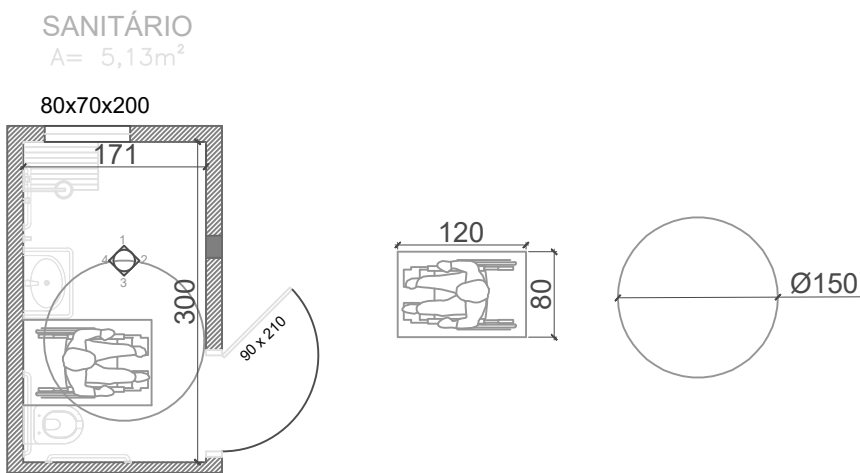
CORTE DET. APARTAMENTO
Hospital Municipal Santana
ESC 1/50



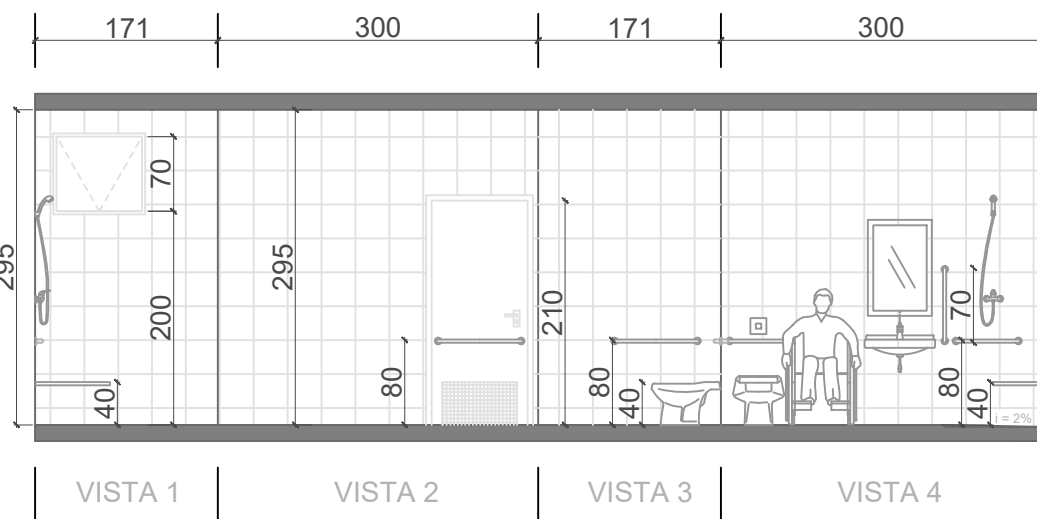
PLANTA DET. ENFERMARIA
Hospital Municipal Santana
ESC 1/50



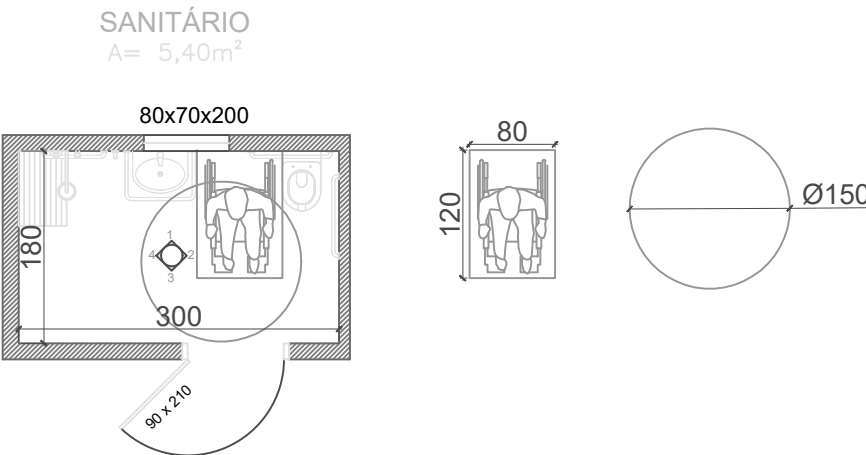
CORTE ENFERMARIA
Hospital Municipal Santana
ESC 1/50



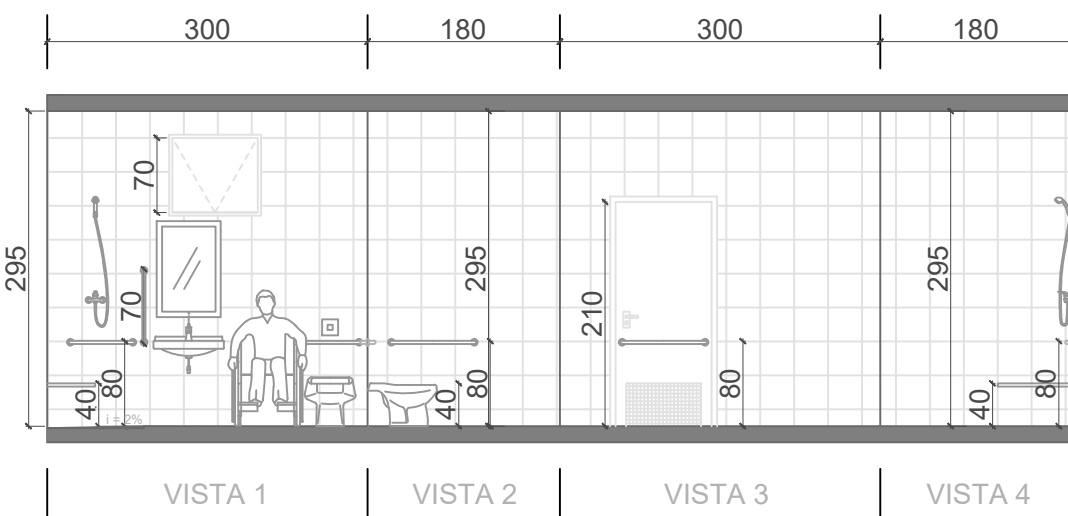
PLANTA DET. SANITÁRIO APARTAMENTO
Hospital Municipal Santana
ESC 1/50



CORTE DET. BANHEIRO APARTAMENTO
Hospital Municipal Santana
ESC 1/50



PLANTA DET. SANITÁRIO ENFERMARIA
Hospital Municipal Santana
ESC 1/50



CORTE DET. BANHEIRO ENFERMARIA
Hospital Municipal Santana
ESC 1/50

 AMMA - Associação dos Municípios do Meio Rural de Pernambuco Rua José Pereira, 285 - Bairro São João - Recife - PE Fone: (81) 321.3322/3377 E-mail: amma@ammamunicípios.org.br - www.ammamunicípios.org.br		Projeto de Reforma	
MUNICÍPIO DE CARANDAI		Gisele Cavalcante Engenheira Civil - CREA 135694/PE-1915	
Autarquia Municipal	Projeto	Assessoria	Assessoria
Washington Luiz Cavalcante Torres			
PROJETO DE REFORMA DO HOSPITAL SANTANA, LOCALIZADO NA CIDADE DE CARANDAI, MG.			
Projeto	PROJETO CORTE AA E BB PLANTAS DETALHADOS APT, ENFERMARIAS E CORTES DETALHADOS		Assessoria
Projeto	ANTÔNIO CARLOS		Projeto
ESCALA 01/50		03/03	
PROJ. CARANDAI		Data	
		DEZEMBRO - 2021	
Observações			